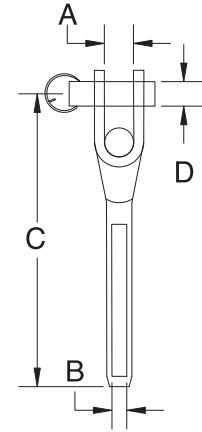


## SWAGE TOGGLE

S.S. T316 MACHINED



ITEM	A (WIRE)	B	C	D	E
7805S-02	3/32"	0.24"	2-5/8"	0.18"	0.35"
7805S-03	1/8"	0.38"	3"	0.23"	0.70"
7805S-04	5/32"	0.38"	3-9/16"	0.30"	0.50"
7805S-05	3/16"	0.40"	4-1/8"	0.23"	0.70"
7805S-06	7/32"	0.55"	5-1/8"	0.46"	0.72"
7805S-065	1/4"	0.50"	5"	0.31"	0.72"
7805S-08	5/16"	0.68"	6-1/2"	0.60"	1.58"
7805S-10	3/8"	0.827"	7-5/16"	0.75"	1.20"
7805S-13	1/2"	0.88"	8"	0.75"	1.80"

MACHINE OR ROLLER SWAGE REQUIRED.

HAND SWAGE AVAILABLE FOR 1/8" & 3/16" CABLE SIZE.