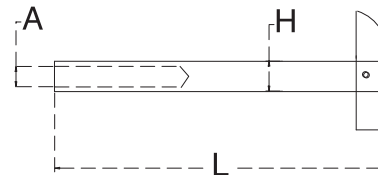


## ■ DROP PIN SWAGE STUD

S.S. T316 MACHINED



ITEM	A (CABLE)	L	H	AFTER SWAGE	TO USE WITH
7804S-03-HS	1/8"	4"	0.25"	0.19"	312S-PW-0603-HS
7804S-05-HS	3/16"	4"	0.25"	0.25"	312S-PW-0605-HS

THIS STYLE PROVIDE A CLEAN LOOK ON THE POST, FOR INSTALLATION, DRILL THE HOLE ON THE POST AND INSERT THE DROP PIN TERMINAL INTO THE POST, TURN 90 DEGREE AND START TENSION THE TURNBUCKLE. THIS FITTING CAN BE HAND SWAGE AT JOB SITE. SEE PAGE 77 FOR MATCHING TURNBUCKLE.