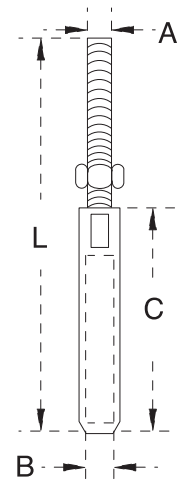


# SWAGE STUD

S.S. T316 MACHINED



ITEM	A (THREAD)	B	C	L	AFTER SWAGE
7801S-0501	3/16"	1/16"	1"	2.56"	0.125"
7801S-0501-L	3/16"	1/16"	1"	2.56"	0.125"
7801S-0502	3/16"	3/32"	2"	4"	0.190"
7801S-0603	1/4"-20	1/8"	2"	4"	0.215"
7801S-0603-L	1/4"-20 LEFT HAND	1/8"	2"	4"	0.215"
7801S-0604	1/4"-20	5/32"	2-5/16"	4-3/8"	0.245"
7801S-0604-L	1/4"-20 LEFT HAND	5/32"	2-5/16"	4-3/8"	0.245"
7801S-0605	1/4"-20	3/16"	2-1/2"	4-1/2"	0.310"
7801S-0605-L	1/4"-20 LEFT HAND	3/16"	2-1/2"	4-1/2"	0.310"
7801S-0804	5/16"-18	5/32"	2-3/8"	4-5/8"	0.245"
7801S-0804-L	5/16"-18 LEFT HAND	5/32"	2-3/8"	4-5/8"	0.245"
7801S-0805	5/16"-18	3/16"	2-9/16"	4-7/8"	0.310"
7801S-0805-L	5/16"-18 LEFT HAND	3/16"	2-9/16"	4-7/8"	0.310"
7801S-0806	5/16"-18	1/4"	3-1/8"	5-1/2"	0.435"
7801S-0806-L	5/16"-18 LEFT HAND	1/4"	3-1/8"	5-1/2"	0.435"
7801S-1005	3/8"-16	3/16"	2-9/16"	5-5/16"	0.310"
7801S-1005-L	3/8"-16 LEFT HAND	3/16"	2-9/16"	5-5/16"	0.310"
7801S-1055	3/8"-16	7/32"	2-3/8"	5-1/2"	0.370"
7801S-1055-L	3/8"-16 LEFT HAND	7/32"	2-3/8"	5-1/2"	0.370"
7801S-1006	3/8"-16	1/4"	3-3/16"	6"	0.435"
7801S-1006-L	3/8"-16 LEFT HAND	1/4"	3-3/16"	6"	0.435"
7801S-1306	1/2"-13	1/4"	2-7/8"	6-1/2"	0.435"
7801S-1306-L	1/2"-13 LEFT HAND	1/4"	2-7/8"	6-1/2"	0.435"
7801S-1307	1/2"-13	9/32"	3"	6-5/8"	0.495"
7801S-1307-L	1/2"-13 LEFT HAND	9/32"	3"	6-5/8"	0.495"
7801S-1308	1/2"-13	5/16"	4"	7-5/16"	0.560"
7801S-1308-L	1/2"-13 LEFT HAND	5/16"	4"	7-5/16"	0.560"
7801S-1610	5/8"-11	3/8"	4-3/8"	8-5/8"	0.620"
7801S-1610-L	5/8"-11 LEFT HAND	3/8"	4-3/8"	8-5/8"	0.620"
7801S-2013	3/4"-10	1/2"	5-1/4"	10"	0.745"
7801S-2013-L	3/4"-10 LEFT HAND	1/2"	5-1/4"	10"	0.745"
7801S-2216	7/8"-9	5/8"	7-1/4"	13"	0.995"
7801S-2216-L	7/8"-9 LEFT HAND	5/8"	7-1/4"	13"	0.995"
7801S-2516	1"-8	5/8"	8-3/4"	14"	0.99"-1.00"
7801S-3220	1-1/4"-7	3/4"	10-1/2"	16-1/2"	1.23"-1.25"

ALL THREADS ARE UNC STANDARD.  
MORE SIZE ARE AVAILABLE, PLEASE CALL.