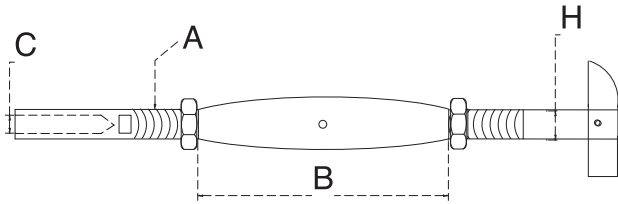


■ DROP PIN & SWAGE STUD TURNBUCKLE

S.S. T316 MACHINED & STAMP



ITEM	A	C	B	H	L	AFTER SWAGE	TO USE WITH
312S-PW-0603-HS	1/4"-20	1/8"	3-3/4"	0.25"	7-5/8"	0.19"	7804S-03-HS
312S-PW-0605-HS	1/4"-20	3/16"	3-3/4"	0.25"	7-5/8"	0.25"	7804S-05-HS

THIS STYLE PROVIDE A CLEAN LOOK ON THE POST, FOR INSTALLATION, DRILL THE HOLE ON THE POST AND INSERT THE DROP PIN TERMINAL INTO THE POST, TURN 90 DEGREE AND START TENSION THE TURNBUCKLE. THIS FITTING CAN BE HAND SWAGE AT JOB SITE.