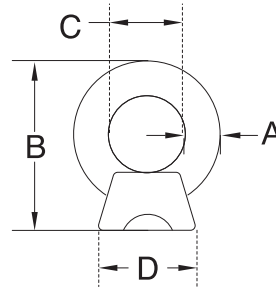


LIFTING EYE NUT

**S.S. T316
PRECISION CAST**



ITEM	TAP SIZE	A	B	C	D	WLL (lb)	WT (lb)
3061S-A-06	1/4"	3/16"	1-3/16"	5/8"	1/2"	400	0.05
3061S-A-08	5/16"	1/4"	1-9/16"	3/4"	5/8"	800	0.07
3061S-A-10	3/8"	5/16"	1-7/8"	1"	3/4"	1,000	0.14
3061S-A-13	1/2"	3/8"	2-3/8"	1-1/4"	1"	2,000	0.30
3061S-A-16	5/8"	1/2"	2-7/8"	1-3/8"	1-1/8"	3,200	0.45
3061S-A-20	3/4"	5/8"	3-3/8"	1-9/16"	1-5/16"	4,700	0.80
3061S-A-22	7/8"	3/4"	3-7/8"	1-3/4"	1-5/8"	5,800	1.30
3061S-A-25	1"	7/8"	4-3/8"	2"	1-3/4"	7,500	1.65
3061S-A-32	1-1/4"	1"	5-3/8"	2-3/8"	2-5/16"	9,000	3.25

UNC THREAD IS STANDARD, METRIC THREAD ALSO AVAILABLE, SPECIFY WHEN ORDERING.